

# Update "Chord machine module" on Windows PC

<http://flame.fortschritt-musik.de>

## 1. Download and Install the Atmel Flip Version 2.4.6

The first thing you need to do is install the Atmel FLIP application. We approve the FLIP Version 2.4.6 (for Windows 98/Me/NT/2000/XP/Vista/7). You can get it from here:

[http://www.atmel.com/dyn/resources/prod\\_documents/flip-2\\_4\\_6.zip](http://www.atmel.com/dyn/resources/prod_documents/flip-2_4_6.zip)

- unzip the installation file
- start Setup.exe and follow the installation dialog

Please download the new Flame firmware update file from here:

<http://flame.fortschritt-musik.de> (go to the "Chord machine" directory)

## 2. Install windows drivers for the Atmel controller:

### 2.1. Connect USB and put the module in bootloader mode

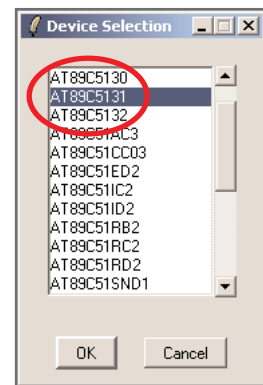
- power down the unit
- set the jumper by the USB jack in left position (LOAD)
- connect the unit with the USB cable to your computer
- power on the unit

### 2.2. Install the drivers:

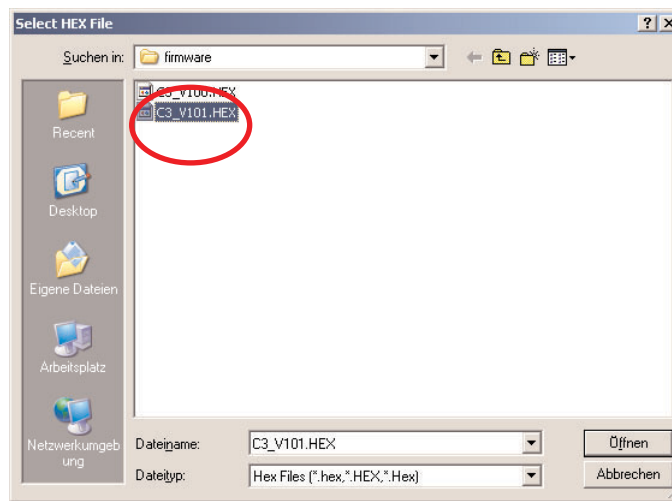
Load the driver. If this is your first time connecting the module, you'll probably get the "New Hardware" dialog box. On a Windows machine, you'll need to load a driver that tells the OS who the device is and how to access it. The Atmel's USB DFU class driver should already be installed when you install FLIP and you just need to point it to Atmel's .INF file. To do this, you'll need to specify that Windows doesn't need to automatically search for the driver and that you'll tell it where to get it. The Atmel .INF file is located in the directory like this: C:\Program Files\ATMEL\FLIP 2.4.6\usb\

## 3. Load the new firmware file on FLIP:

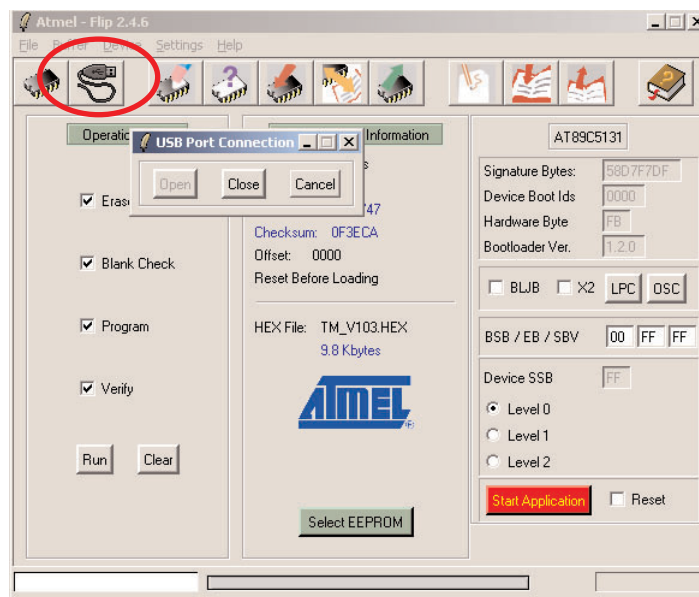
Once the driver is loaded, you can start up the Atmel FLIP software.



**You'll need to specify the target MCU:** For the module it will be the AT89C5131. Once the proper MCU is selected, push OK. > Device > Select > **AT89C5131**

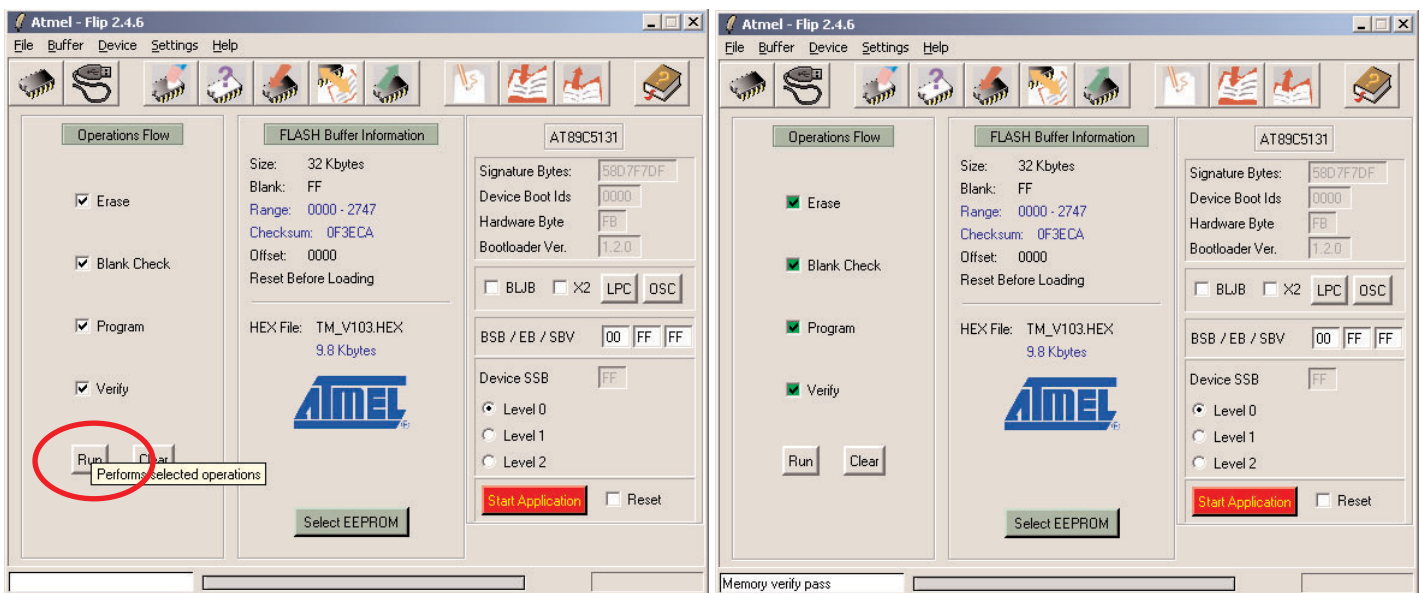


**Specify the firmware file to be loaded:** You'll next need to specify the firmware hex file that you want to load to the target. Go to "File/Load Hex File" and select it. Then browse to the directory that contains your hex file and click on the hex file. Then push OK.



### Open the USB port:

Next, click on the big USB cable button on the top. This specifies which port to open. You'll want to click on the USB option and push Open.



**Program the board:** Now you should be all set up. Push "Run". You should see a progress bar as the firmware downloads. It will actually download quite fast.

#### **4. Restart and reset the module:**

- power down the module,
- disconnect the usb cable
- set back the jumper by the USB jack in right position
- while power on the module, please hold down the push button OK pressed as long as both LED's CHORD Bank blink (after the LED sequence)
- let loose the button - now the internal memories will be reset

Now the update is finished.